

# Material Safety Data Sheet

## DJ Power

PRO-A, PRO-D, PRO-V, PRO-SW, PRO-GX, PRO-Q, DJV-001, DJV-005, D-01, D-03, D-06

Prepared for: GUANGZHOU DJPOWER ELECTRONIC TECHNOLOGY CO.,LTD Room 401-661,4th Floor,Building 1,Industrial Innovation Park, High-tech Zone, No.13, Ketai 2nd Road,Guangzhou Private Science and Technology Park, Baiyun District, Guangzhou

Prepared by: Shenzhen LCS Compliance Testing Laboratory Ltd. 901, No.40 Building, Xialang Industrial Zone, Heshuikou Community, Matian Street, Guangming District, Shenzhen, Guangdong, China

Issue Date: June 07, 2024

Report Number: KA2406040023A

Written by: Terry.Wang

Approved by: 

## Section 1-Chemical Product and Company Identification

Product: HAZE FLUID

Trademark: DJPOWER

Model: PRO-A, PRO-D, PRO-V, PRO-SW, PRO-GX, PRO-Q, DJV-001, DJV-005, D-01, D-03, D-06

Manufacturer: GUANGZHOU DJPOWER ELECTRONIC TECHNOLOGY CO. LTD

Address: Room 401-661, 4th Floor, Building 1, Industrial Innovation Park ,High-tech Zone, No.13, Ketai  
2nd Road, Guangzhou Private Science and Technology Park, Baiyun District, Guangzhou

Supplier: Show Technology Pty Ltd, 101 Derby St, Silverwater, NSW, 2128, Australia  
Tel: +61 (2) 9748 1122 Fax: +61 (2) 9748 1499 (Mon to Fri- 0900 to 1730 AEST/AEDT)  
24-hour contact Mr V. Haddad +61 419 898 222

## Section 2- Hazards Identification

### 2.1 Classification of the substance or mixture

Not Classified

### 2.2 GHS label elements, including precautionary statement

Pictogram(s)	No symbol
Signal word	No signal word
Hazard statement(s)	None
Precautionary statement(s)	
Prevention	None
Response	None
Storage	None
Disposal	None

### 2.3 Other hazards which do not result in classification

No data available

## Section 3- Composition/Information on Ingredients

Chemical Name	Chemical Formula	CAS No.	In % By Weight
1,2-Propanediol	C3H8O2	57-55-6	60%
Water	H2O	7732-18-5	40%

## Section 4- First Aid Measures

### 4.1 Description of necessary first-aid measures

**If inhaled:** Fresh air, rest.

**Following skin contact:** Remove contaminated clothes. Rinse skin with plenty of water or shower.

**Following eye contact:** First rinse with plenty of water for several minutes (remove contact lenses if easily possible), then seek medical attention.

**Following ingestion:** Rinse mouth. Do NOT induce vomiting.

### 4.2 Most important symptoms/effects, acute and delayed

No data available

### 4.3 Indication of immediate medical attention and special treatment needed, if necessary

No data available

## Section 5- Fire Fighting Measures

### 5.1 Suitable extinguishing media

Use dry chemical, carbon dioxide or alcohol-resistant foam

### 5.2 Specific hazards arising from the chemical

Non-Combustible

### 5.3 Special protective actions for fire-fighters

Use powder, AFFF, foam, carbon dioxide

## Section 6- Accidental Release Measures

### 6.1 Personal precautions, protective equipment and emergency procedures

Collect as much of the leaking or spilled liquid in sealable containers. Absorb remaining liquid in sand or inert absorbent. Then store and dispose in accordance to local regulations.

### 6.2 Environmental Precautions

Prevent further spillage or leakage if it is safe to do so. Do not let the chemical enter drainage. Discharge into the environment must be avoided.

### 6.3 Methods and materials for containment and cleaning up

Collect and arrange disposal. Keep the chemical in a suitable sealed container for disposal. Remove all sources of ignition. Use spark-proof tools and explosion-proof equipment. Adhered or collected material should be promptly disposed of in accordance with appropriate local laws and regulations.

## Section 7- Handling and storage

### 7.1 Precautions of safe handling

NO open flames. Use in a well-ventilated place. Wear suitable PPE. Avoid contact with skin and eyes. Avoid formation of dust and aerosols. Use non-sparking tools. Prevent fire caused by electrostatic discharge steam.

### 7.2 Conditions for safe storage, including any incompatibilities

Store the container tightly closed in a dry, cool and well-ventilated place. Store apart from containers containing food or other incompatible materials.

## Section 8- Exposure Controls, Personal Protection

### 8.1 Control Parameters

Occupational Exposure Limit Values-  
No Data Available

Biological Limit Values-  
No Data Available

## 8.2 Appropriate engineering controls

Ensure adequate ventilation. Handle in accordance with good industrial hygiene and safety practices. Set up emergency exits and a risk-elimination area.

## 8.3 Individual protection measures, such as personal protective equipment (PPE)

### Eye/face protection:

Wear safety spectacles

### Skin protection:

Protective gloves

### Respiratory protection:

Use ventilation

### Thermal hazards:

No data available

## Section 9- Physical and Chemical Properties

**Physical State:** Liquid

**Colour:** Transparent

**Solid Content:** N/A

**Boiling Point:** N/A

**Melting Point:** N/A

## Section 10- Stability and Reactivity

### 10.1 Reactivity

No Data Available

### 10.2 Chemical stability

No Data Available

### 10.3 Possibility of hazardous reactions

No Data Available

### 10.4 Conditions to avoid

No Data Available

### 10.5 Incompatible materials

No Data Available

### 10.6 Hazardous decomposition products

No Data Available

#### SYDNEY

101 Derby Street, Silverwater  
NSW 2128 Australia  
+61 2 9748 1122

#### MELBOURNE

210 Lorimer Street  
Port Melbourne VIC 3207 Australia  
+61 3 9681 7511

#### PERTH

18 Milly Court, Malaga  
WA 6090 Australia  
+61 8 9248 8119

#### BRISBANE

3/459 Tufnell Road, Banyo  
QLD 4014 Australia  
+61 7 3267 3177

#### AUCKLAND

157 Neilson Street  
Onehunga 1061 New Zealand  
+64 9 869 3293

## Section 11- Toxicological Information

### *Acute Toxicity:*

*Oral-* No Data Available  
*Inhalation-* No Data Available  
*Dermal-* No Data Available

### *Skin Corrosion/Irritation:*

No Data Available

### *Serious Eye Damage/Irritation:*

No Data Available

### *Respiratory or skin sensitisation:*

No Data Available

### *Germ cell mutagenicity:*

No Data Available

### *Carcinogenicity:*

This product is not listed in the IARC (International Agency for Research on Cancer) classification.

### *Reproductive toxicity:*

No Data Available

### *STOT-single exposure:*

No Data Available

### *STOT-repeated exposure:*

No Data Available

### *Aspiration hazard:*

No indication can be given about the rate at which a harmful concentration of this substance in the air is reached on evaporation at 20°C.

## Section 12- Ecological Information

### 12.1 Toxicity

Toxicity to fish: No Data Available

Toxicity to daphnia and other aquatic invertebrates: No Data Available

Toxicity to algae: No Data Available

Toxicity to microorganisms: No Data Available

### 12.2 Persistence and degradability

No Data Available

### 12.3 Bioaccumulative potential

No Data Available

### 12.4 Mobility in soil

No Data Available

### 12.5 Other Adverse effects

No Data Available

## Section 13- Ecological Information

### 13.1 Disposable Methods

#### Product

The material can be disposed by a licensed chemical destruction plant or by controlled incineration with flue gas scrubbing. Do not contaminate water, food, or seed by storage or disposal. Do not discharge to sewer or drainage systems.

#### Contaminated Packaging

Containers can be rinsed out 3 times (or equivalent) and offered for recycling or reconditioning. Alternatively, the packaging can be punctured to make it unusable for other purposes and then be disposed of in a sanitary landfill. Controlled incineration with flue gas scrubbing is possible for combustible packaging materials.

## Section 14- Transport Information

According to IATA DGR transportation rule, this product is not considered to be dangerous goods. It can be transported by airplane or ship. The product should be securely packed. During transport, the vehicle should prevent exposure to rain and high temperatures. For stopovers, the vehicle should be placed away from flame and heat sources. When transported by air, the pallet assembly should be kept away from rest spaces and cooking areas as well as isolated from the engine room, power and flame sources. When transported by sea, the pallet assembly should be kept away from bedrooms and kitchens, and isolated from the engine room, power and flame sources. When being transported by road, the driver should drive in accordance with a regulated route. The vehicle should be parked in the shade, not close to flames or other heat sources.

**Hazard class code:** No

**Transport hazard class/es:** No

**Packing group:** No

**Marine pollutant:** No

**Danger Code (Kemler):** -

**Transport in bulk according to Annex II of MARPOL73/78 and the IBC Code:** Not applicable

## Section 15- Regulatory Information

OSHA hazard communication standard (29 CFR 1910.1200)

ISO 11014-2009 Safety data sheet for chemical products - Content and order of sections.  
Regulation (EC) No.1272/2008 Classification, Labeling and Packaging of Substances and Mixtures.

Regulation (EC) No 1907/2006 of the European Parliament and of the Council concerning the Registration, Evaluation, Authorisation and Restriction of Chemicals (REACH)  
SVHC Candidate list of REACH Regulation Annex XIV Authorisation:None of the ingredients is listed.

REACH Regulation Annex XVII Restriction:None of the ingredients is listed.

Regulation (EC) No 1272/2008 of the European Parliament and of the Council of 16 December 2008 on classification, labelling and packaging of substances and mixtures.

## Section 16- Other Information

The above information is based on the most current information we are aware of and is believed to be correct as of the date of publication. Since this information may be applied under conditions beyond our control and with which we may be unfamiliar, and information made available after the publication of this document may suggest modifications of the information, we do not assume any responsibility for the results of its use. This information is supplied upon condition that the person receiving it shall make their own determination of the suitability of the material for their intended purpose.

### SYDNEY

101 Derby Street, Silverwater  
NSW 2128 Australia  
+61 2 9748 1122

### MELBOURNE

210 Lorimer Street  
Port Melbourne VIC 3207 Australia  
+61 3 9681 7511

### PERTH

18 Milly Court, Malaga  
WA 6090 Australia  
+61 8 9248 8119

### BRISBANE

3/459 Tufnell Road, Banyo  
QLD 4014 Australia  
+61 7 3267 3177

### AUCKLAND

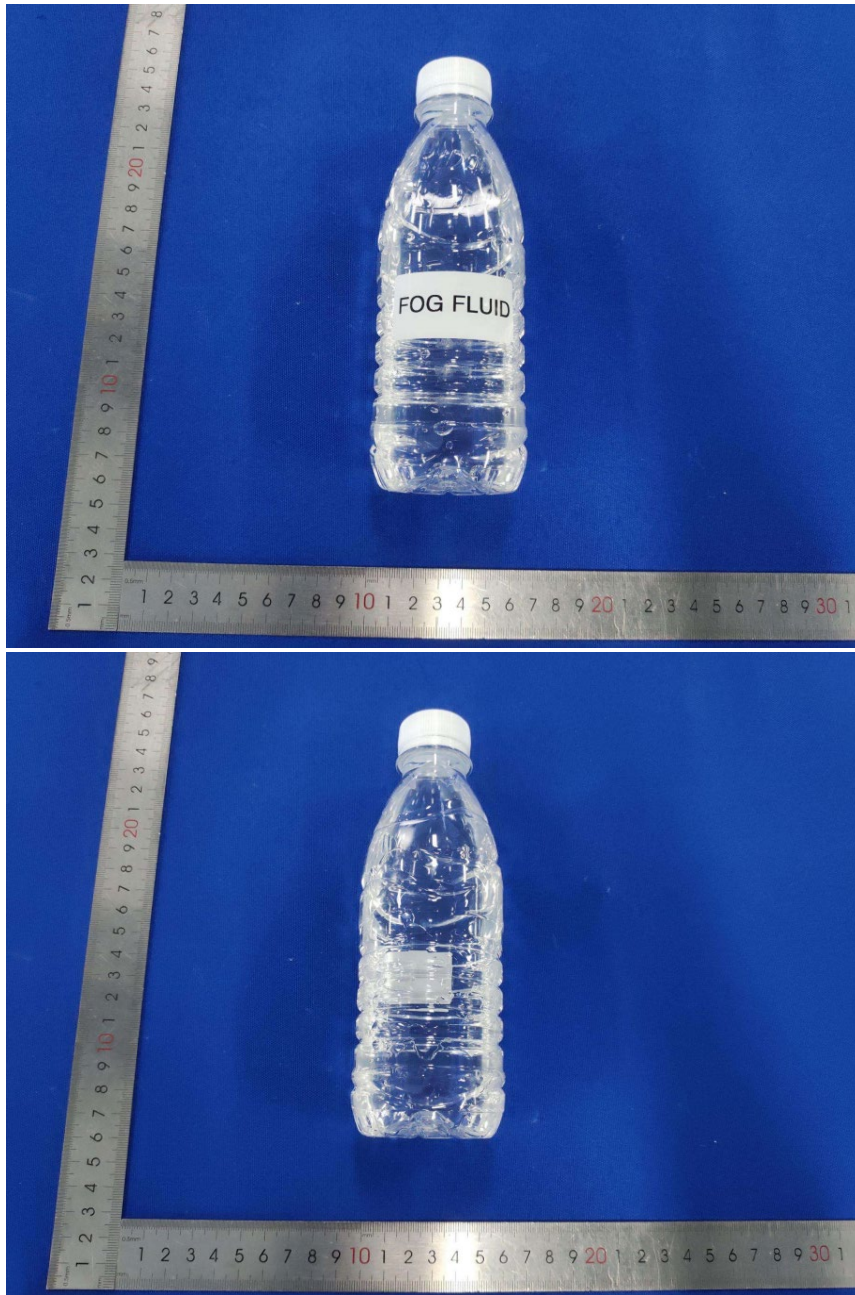
157 Neilson Street  
Onehunga 1061 New Zealand  
+64 9 869 3293

[www.showtech.com.au](http://www.showtech.com.au)

ABN 89 062 241 785



## Photo Documentation-



LCS authenticate the photo on original report only

\*\*\* End of Report \*\*\*

The test report is effective only with both signature and specialised stamp.

The result(s) shown in this report refer only to the sample(s) tested. Without written approval of LCS, this report can't be reproduced except in full.

**SYDNEY**

101 Derby Street, Silverwater  
NSW 2128 Australia  
+61 2 9748 1122

**MELBOURNE**

210 Lorimer Street  
Port Melbourne VIC 3207 Australia  
+61 3 9681 7511

**PERTH**

18 Milly Court, Malaga  
WA 6090 Australia  
+61 8 9248 8119

**BRISBANE**

3/459 Tufnell Road, Banyo  
QLD 4014 Australia  
+61 7 3267 3177

**AUCKLAND**

157 Neilson Street  
Onehunga 1061 New Zealand  
+64 9 869 3293

## Legal Disclaimer

Although we always attempt to make our information as accurate, current, and complete as possible, the information herein is provided "as is" without any express or implied warranty of any kind. As such we disclaim liability for any inaccuracy, non-currency or incompleteness of any individual item herein and the inability to fulfill any purpose contemplated.

We disclaim liability for any injury, damage, direct or indirect loss, consequential or economic loss or any other loss occasioned by any use of the product not in conformity with the instructions herein.

If you have purchased the product for supply to a third party, it is your duty to take all necessary steps to ensure that any person handling and using the product is provided with the information in this sheet. If you are an employer, it is your duty to tell your employees and others who may be affected by any hazard described in this sheet and of any precautions that should be taken. We disclaim liability for any injury, damage, direct or indirect loss, consequential or economic loss or any other loss occasioned by you by any non-compliance with these instructions.

### SYDNEY

101 Derby Street, Silverwater  
NSW 2128 Australia  
+61 2 9748 1122

### MELBOURNE

210 Lorimer Street  
Port Melbourne VIC 3207 Australia  
+61 3 9681 7511

### PERTH

18 Milly Court, Malaga  
WA 6090 Australia  
+61 8 9248 8119

### BRISBANE

3/459 Tufnell Road, Banyo  
QLD 4014 Australia  
+61 7 3267 3177

### AUCKLAND

157 Neilson Street  
Onehunga 1061 New Zealand  
+64 9 869 3293